



EU login setup and CPMS access request

Draft v.20.07.2020

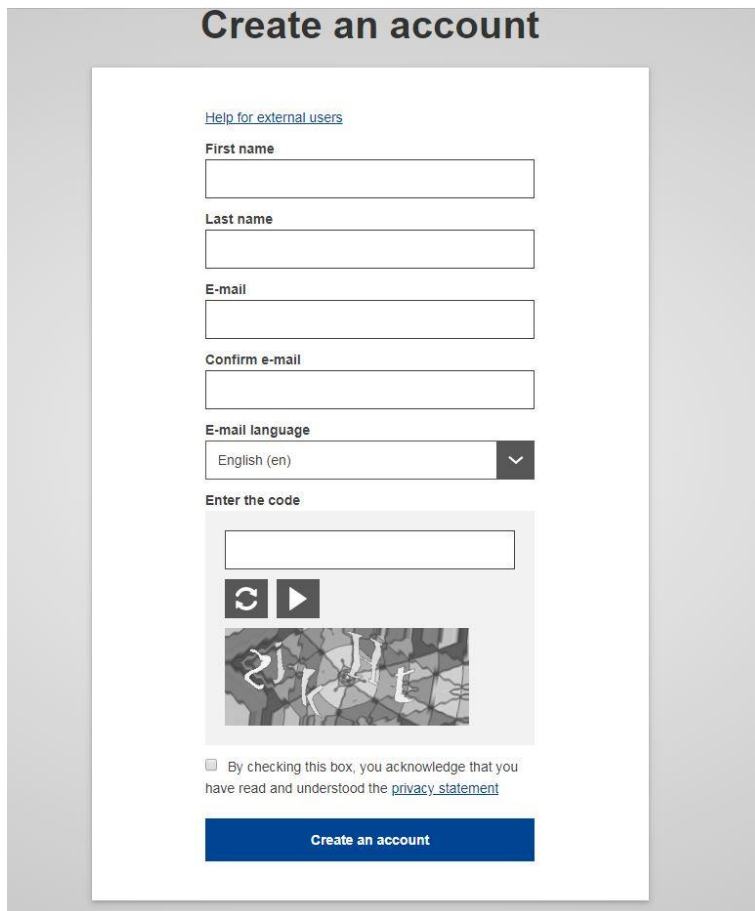
Table of Contents

1. EU login setup	2
1.1. Create an account	2
1.2. EU login confirmation	2
1.3. Create a password	3
1.4. Sign in to your EU login account	3
2. two level authentication setup	5
2.1. Mobile + SMS setup	5
2.2. ECAS Mobile app	6
2.3. Sign in with ECAS Mobile App PIN code	8
2.4. Sign in with ECAS Mobile App QR code	8
3. Making an CPMS access request	9
3.1. Login to the authorization system	9
3.2. Step 1: select application	9
3.3. Step 2: selection organisation	9
3.4. Step 3: select access profile	10
3.5. Step 4: select access profile	10

1. EU LOGIN SETUP

1.1. Creating an account

- In order to access CPMS a general EU login is required. When using EU systems and CPMS we recommend using **Google Chrome** or **Mozilla Firefox** as a web-browser.
- Use this link to register: <https://webgate.ec.europa.eu/cas/eim/external/register.cgi>
 - Use of your institutional email address is preferred
- Complete the details and click **“create account”**



The screenshot shows a web form titled "Create an account". At the top left, there is a link for "Help for external users". The form contains several input fields: "First name", "Last name", "E-mail", and "Confirm e-mail". Below these is a dropdown menu for "E-mail language" set to "English (en)". There is a section for "Enter the code" with a text input field, a refresh button, and a play button. Below the code input is a CAPTCHA image. At the bottom, there is a checkbox with the text "By checking this box, you acknowledge that you have read and understood the [privacy statement](#)". A blue button labeled "Create an account" is at the bottom right.

1.2. EU login confirmation

- After a few minutes you will receive a confirmation email on the registered email address with a link to setup your password.

Dear ...,

You have been registered in EU Login.

Your email address is [...@...](#).

To create your password, follow the link below:

[this link](#)

You have a maximum of 5 min, starting from the time that this message was sent, to create your password, but you are encouraged to do so immediately if possible. After this time, you can make another request by following the same link: you will then need to re-enter your username and confirm your request.

If the above link does not work, you can copy the following address (make sure the complete address is copied!) and paste it into your browser's address bar:

<https://ecas.ec.europa.eu/cas/init/initialisePasswordLogin.cgi?xxx...>

Instead of replying to this message, if you have a problem, please follow the help or contact information on the site where you were trying to register.

Note that it may take up to 5 minutes after reception of this mail before the above-mentioned site will recognize your registration.

Sent to you by EU Login

- Click “**this link**” to setup your password
- If the link does not open or opens in the wrong browser, then copy and paste the full address (blue) shown below in the email

1.3. Create a password

- On the next screen choose a password according to the restrictions noted below
- Your password must be at least 10 characters long and be a combination of:
 - Uppercase letters
 - Lowercase letters
 - Numbers
 - Special characters
- Retype your password to confirm
- Click submit and proceed to sign in

1.4. Sign in to your EU login account

- Use the email address used during the registration
 - If using a private computer, it will save this input

Sign in to continue

Use your e-mail address

Next

[Create an account](#)


Or


- On the next screen, enter your password and ensure that the verification method is set to “**password**”

Password

[Lost your password?](#)

Choose your verification method

Password 

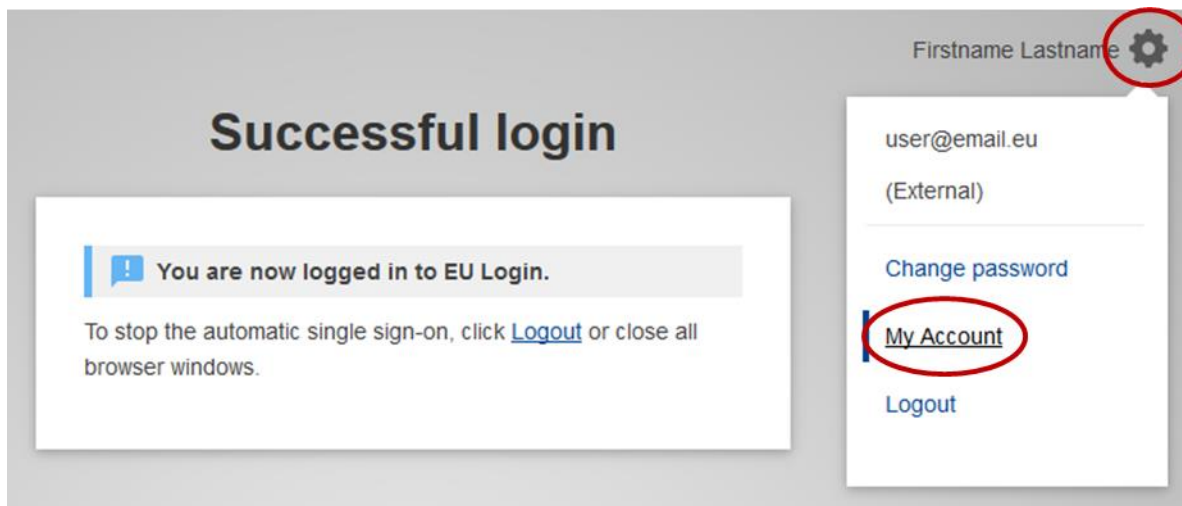


Sign in

- You are now logged in and ready to continue to the **two level authentication setup**

2. TWO LEVEL AUTHENTICATION SETUP

- When using CPMS a two-level authentication is required to login
- There are three ways to use your mobile to do this.
 1. Mobile + SMS: requires you to register your mobile phone number with EU Login.
 2. Mobile app PIN code: requires you to download the ECAS Mobile App ECAS Mobile App via the App Store on your phone.
 3. Mobile app QR code: requires you to download the ECAS Mobile App QR code via the App Store on your phone.
- Login on using your newly created EU login (<https://webgate.ec.europa.eu/cas>)
- After logging in, click in the top right corner on the **Gear icon**

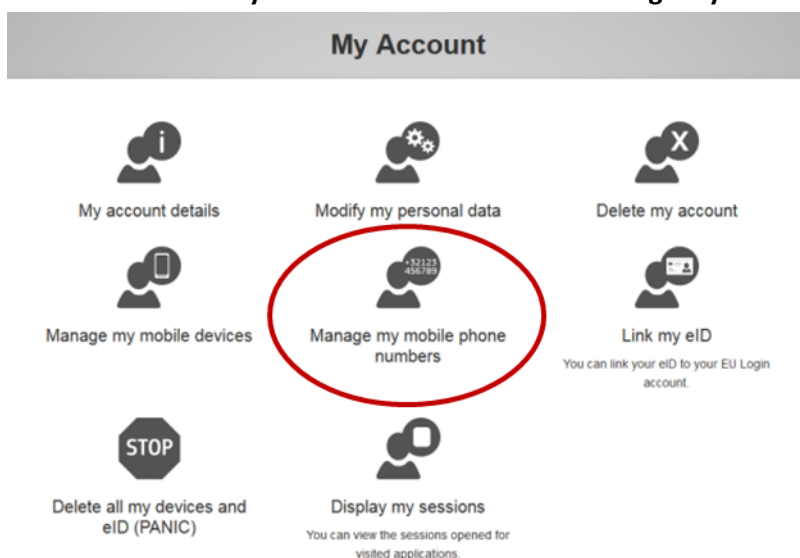


- Then click the “**My account**” this will show your personal option
- Choose a method of authentication to continue this instruction
 - **Mobile + SMS setup**
 - **ECAS Mobile app** (for PIN or QR code authentication)

2.1. Mobile + SMS setup

please note that, since SMS requires agreements between operators to interconnect mobile networks, this method of authentication might not be fully reliable. If this is the case, it is advised that you use instead one of the two solutions based on the ECAS Mobile App (assuming you have a smartphone).

- Once clicked the “**My account**” button click on “**manage my mobile phone numbers**”



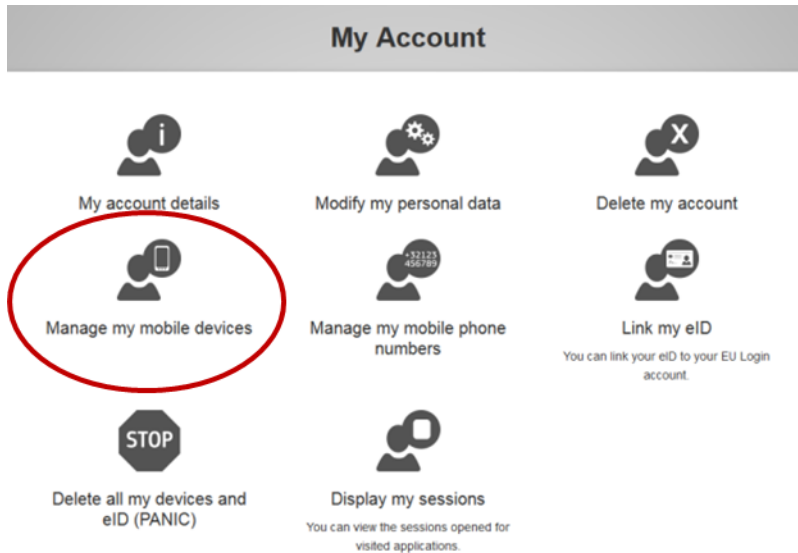
- Then click “**add a mobile phone number**”

- Begin the phone number field with a “+” sign followed by your country code and phone number
 - Example: +(country code)(your phone number)
 - To look up your country code use: https://en.wikipedia.org/wiki/Telephone_numbers_in_Europe
- Click “**add**”
- An challenge code will be sent to you phone by text message
- Type this code into the “**Text message challenge code**” field on screen and click “**Finalise**”
- In order to test your access to CPMS you can
 - Log out of EU Login
 - Click this link: <https://webgate.ec.europa.eu/cas>
 - From the drop-down menu, change “**Password**” to “**Mobile + SMS**”
 - Enter your password and click “**Sign in**”
 - You’re now ready to continue to

- CPMS access request

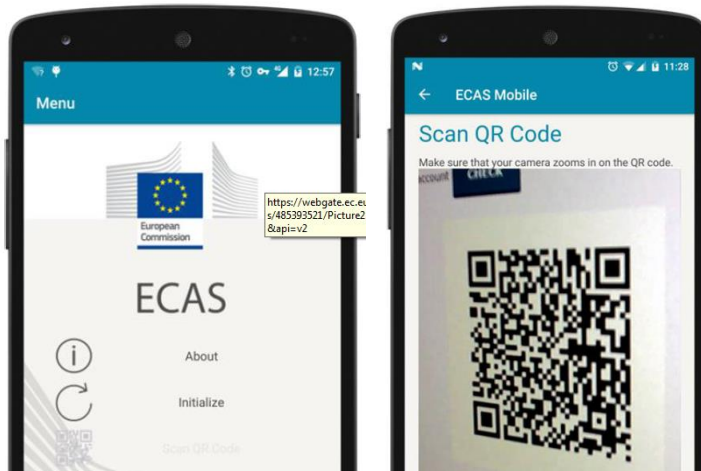
2.2. ECAS Mobile app

- Please note that the mobile app registration is phone specific and in the case of a new phone these registration steps are required to be followed again
- Install the ECAS Mobile app from your app
- open your web browser and make sure you are logged with your EU login
 - (<https://webgate.ec.europa.eu/cas>)
- Then go to the “**My account**” settings click “**Manage my mobile devices**” and click “**add a mobile device**”

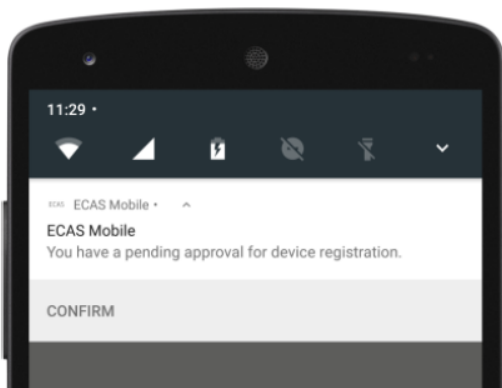


The image shows the 'Add a mobile device' form. The form has a title 'Add a mobile device' and a subtitle 'Please give a name to identify your mobile device and a PIN code to use for it.' The form contains three input fields: 'Your device name', 'Your 4 digit PIN code', and 'Confirm your PIN code'. Below the input fields are two buttons: 'Submit' and 'Cancel'.

- Provide a device name for your phone
- Setup a 4 digit PIN code and confirm this by clicking “**Submit**”
- A QR code will appear on the screen of your web browser



- Open the ECAS mobile app on your phone and press on “**initialize**”. This will open the camera which is used to scan the QR code displayed on your browser
- Then enter your 4 digit PIN code on your phone and click “**authenticate**”
- The EU login will send a confirmation to your phone



- Click confirm to complete the process, your phone registration is now complete
- You can test the PIN or QR code method by following the instructions below, or continue to the

- CPMS access request

2.3. Sign in with ECAS Mobile App PIN code


- On the EU Login screen, from the drop-down menu, select “**ECAS Mobile App PIN Code**”
- Enter your password
- Click “**Sign in**”
- A notification is sent to your mobile device
- Tap the notification to open the App
- Enter the PIN code you set up, or use Touch ID if you have chosen to use that option
- You will be logged in
- You’re now ready to continue to


[Sign in with a different e-mail address?](#)

Password

[Lost your password?](#)

Choose your verification method

EU Login Mobile App PIN Code 



Sign in

- CPMS access request


2.4. Sign in with ECAS Mobile App QR code


- On the EU Login screen, from the drop-down menu, select “**ECAS Mobile App QR Code**”
- Enter your password
- Click “**Sign in**”
- A QR code is displayed on screen
- Open the ECAS Mobile App and select “**Scan QR Code**” from the Menu page
- Point the camera on your phone toward the QR code on screen until it is recognized
- Your phone will display an 8-digit code - enter this in the “**Code generated by your app**” field on screen and click “**Sign in**”
- You will be logged in
- You’re now ready to continue to

Password

[Lost your password?](#)

Choose your verification method

EU Login Mobile App QR Code 



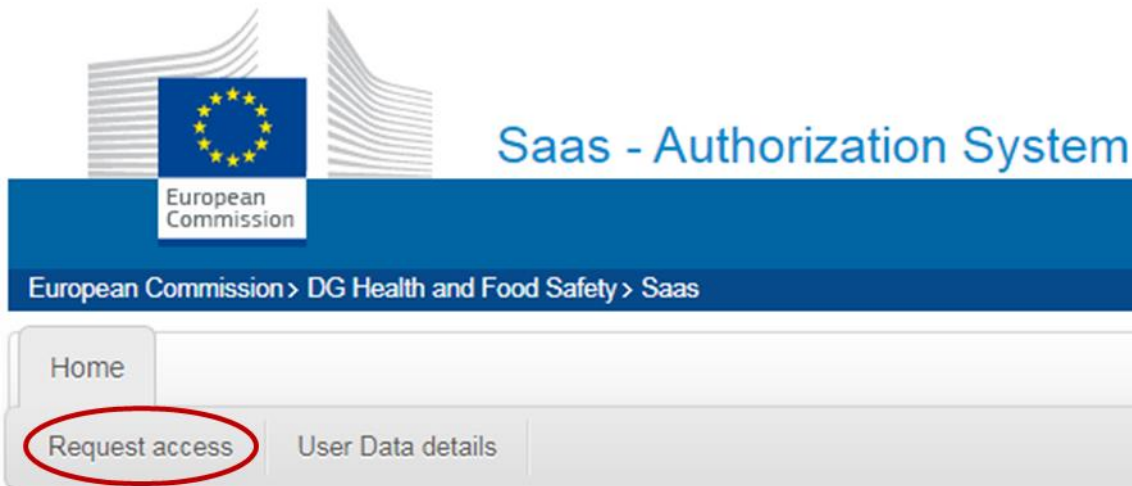
Sign in

3. CPMS ACCESS REQUEST

In order to obtain access to CPMS an access should be made, please follow these instructions on how to do this

3.1. Login to the authorization system

- Go to this link: <https://webgate.ec.europa.eu/saas>
- Login using the created EU Login (2nd authentication is not required)
- Click “Request access” in the top left



- This will open a new application access form, as shown below

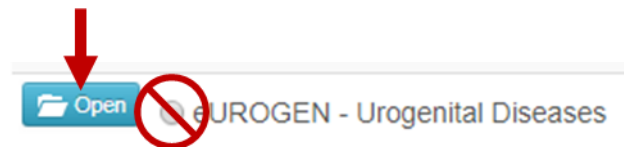
New application access

3.2. Step 1: select application



- Select **CPMS** in the Application Box and click on “Step2” in the lower-right corner

3.3. Step 2: selection organisation

- Scroll down and click **Open** next to eUROGEN
 - Do not continue by only checking the round button, this will only select eUROGEN without specifying your centre and will cause a denial of your request



- A list of countries will be shown, click “Open” next to the country of your centre

 Open	<input type="radio"/> Austria
 Open	<input type="radio"/> Belgium
 Open	<input type="radio"/> Bulgaria
 Open	<input type="radio"/> Your country
 Open	<input type="radio"/> Cyprus
 Open	<input type="radio"/> Czech Republic
 Open	<input type="radio"/> Denmark

- Check the round button next to your centre and click on “**Step3**” in the lower-right corner

Guest access (if specifically required)
 Other affiliated centre in your country
 Your centre

3.4. Step 3: select access profile

- Select your profile by checking the box next to it. For you, this will be “**HP**”
- Click “**Step4**” in the lower-right corner

Name	Status	Description
<input type="checkbox"/> Coordinator	active	handles requests for assistance from ERN and has access to KPIs
<input type="checkbox"/> Dispatcher	active	handles requests for assistance on behalf of Coordinator
<input checked="" type="checkbox"/> HP	deletion requested	healthcare professional available to participate in or lead panels
<input type="checkbox"/> Panel Manager ERN	active	Assists panel lead with managing panels at ERN level
<input type="checkbox"/> Panel Manager HCP	active	Assists panel lead with managing panels at HCP level
<input type="checkbox"/> Researcher	active	can create or consult queries or reports on the anonymised data from the ERN

3.5. Step 4: select access profile

- Recap your request and type in any comments (if required) and click “**Submit Request Access**” to complete the access request

Summary	
Application	CPMS
Organisation	Your centre
Access Profile	HP

Comments

- This will submit your request. Once we've approved this, your account will be created by the CPMS Helpdesk (DG Sante).
- You can then access CPMS in the future via this link: <https://cpms.ern-net.eu/login/>
 - Tip: save this link in your browser as a favourite for easy access

FAQ

During Step 4 only "eUROGEN" is shown like the example below.

Summary	
Application	CPMS
Organisation	eUROGEN
Access Profile	HP

Comments

This is most likely because the check button has been used instead of the open button during the selection of the organisation in Step 2. This can be solved by going back to **Step 2** and follow the instructions shown under **Step 2** shown previously above



<http://eurogen-ern.eu/>

Co-funded by the European Union



ERN eUROGEN is one of the 24 European Reference Networks (ERNs) approved by the ERN Board of Member States. The ERNs are co-funded by the European Commission. For more information about the ERNs and the EU health strategy, please visit <http://ec.europa.eu/health/ern>